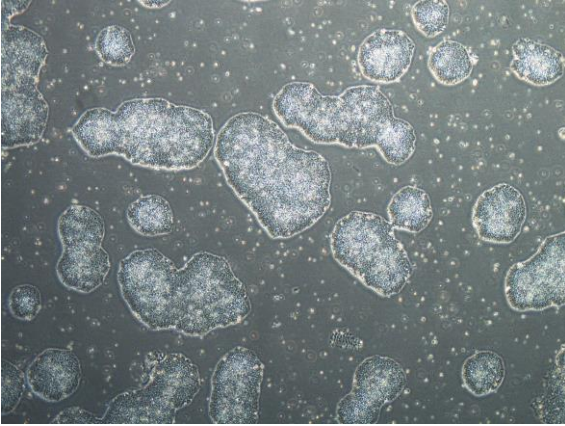
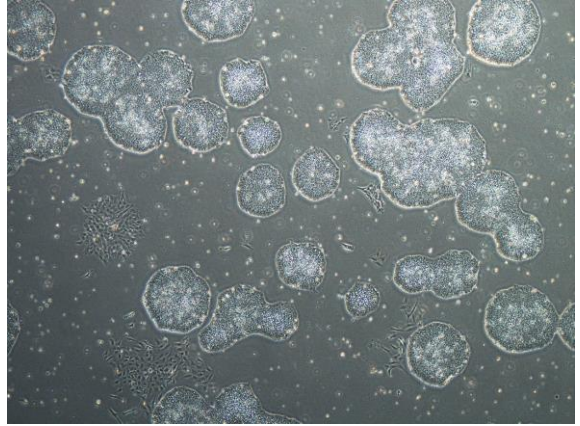


【 CiRA-j-1127 】 Morphology of iPSC colonies

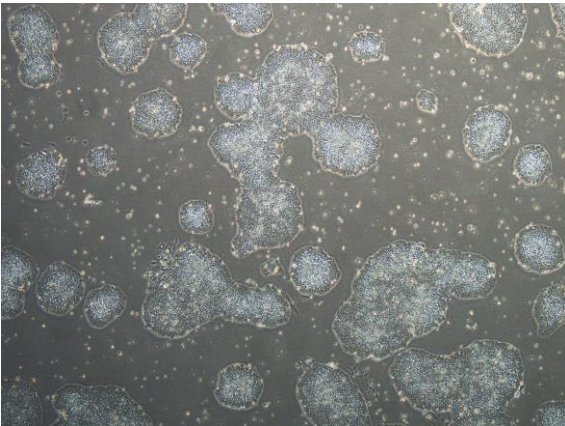
CiRA-j-1127-A: passage-3



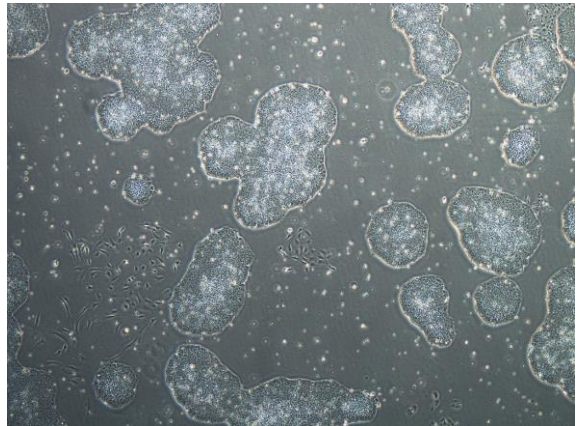
CiRA-j-1127-B: passage-3



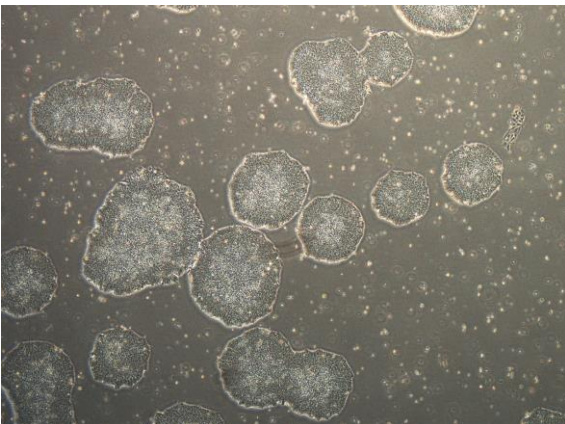
CiRA-j-1127-C: passage-3



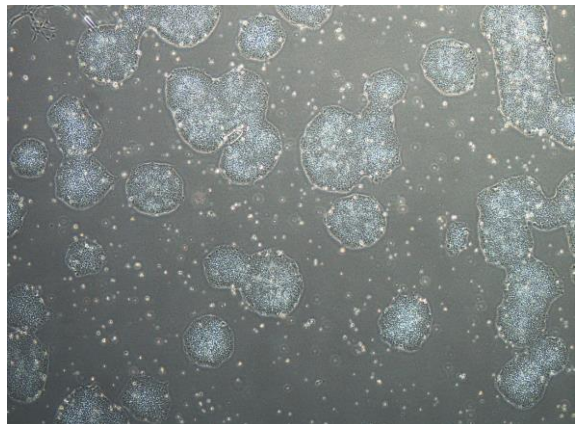
CiRA-j-1127-D: passage-3



CiRA-j-1127-E: passage-3



CiRA-j-1127-F: passage-3



(All images were captured at 4x magnification)